



**REGIONAL SPECIALISED METEOROLOGICAL CENTRE-TROPICAL CYCLONES, NEW DELHI  
TROPICAL WEATHER OUTLOOK**

**DEMS-RSMC SPECIAL TROPICAL CYCLONES NEW DELHI DATED 10.11.2022**

**TROPICAL WEATHER OUTLOOK FOR NORTH INDIAN OCEAN (THE BAY OF BENGAL AND THE ARABIAN SEA) VALID FOR NEXT 120 HOURS ISSUED AT 0600 UTC OF 10.11.2022 BASED ON 0300 UTC OF 10.11.2022.**

**BAY OF BENGAL:**

YESTERDAY'S LOW PRESSURE AREA OVER SOUTHWEST BAY OF BENGAL AND ADJOINING EQUATORIAL INDIAN OCEAN LAY OVER SOUTHWEST BAY OF BENGAL OFF SRILANKA COAST AT 0000 UTC OF TODAY, THE 10TH NOVEMBER. IT PERSISTED OVER THE SAME REGION AT 0300 UTC. IT IS LIKELY TO BECOME MORE MARKED DURING NEXT 24 HOURS. IT IS VERY LIKELY TO MOVE NORTHWESTWARDS TOWARDS TAMILNADU-PUDUCHERRY COASTS TILL 12TH NOVEMBER MORNING (0000 UTC). THEREAFTER IT WOULD MOVE WEST-NORTHWESTWARDS ACROSS TAMILNADU-PUDUCHERRY AND KERALA DURING 12TH TO 13<sup>TH</sup> NOVEMBER, 2022.

ASSOCIATED CLOUDS WITH THE SYSTEM ARE SCATTERED TO BROKEN LOW AND MEDIUM CLOUDS WITH EMBEDDED INTENSE TO VERY INTENSE CONVECTION LAY OVER SOUTHWESTBAY OF BENGAL ADJOINING WESTCENTRAL BAY OF BENGAL. MINIMUM CLOUD TOP TEMPRATURE MINUS 85<sup>0</sup>C.

SCATTERED TO BROKEN LOW AND MEDIUM CLOUDS WITH EMBEDDED INTENSE TO VERY INTENSE CONVECTION LAY OVER CENTRAL AND SOUTHWESTBAY OF BENGAL OF BENGAL. SCATTERED LOW AND MEDIUM CLOUDS WITH EMBEDDED MODERATE TO INTENSE CONVECTION LAY OVER SOUTHEASTBAY OF BENGAL OF BENGAL & SOUTH ANDAMAN SEA.

**PROBABILITY OF CYCLOGENESIS (FORMATION OF DEPRESSION) DURING NEXT 120 HRS:**

24 HOURS	24-48 HOURS	48-72 HOURS	72-96 HOURS	96-120 HOURS
NIL	NIL	NIL	NIL	NIL

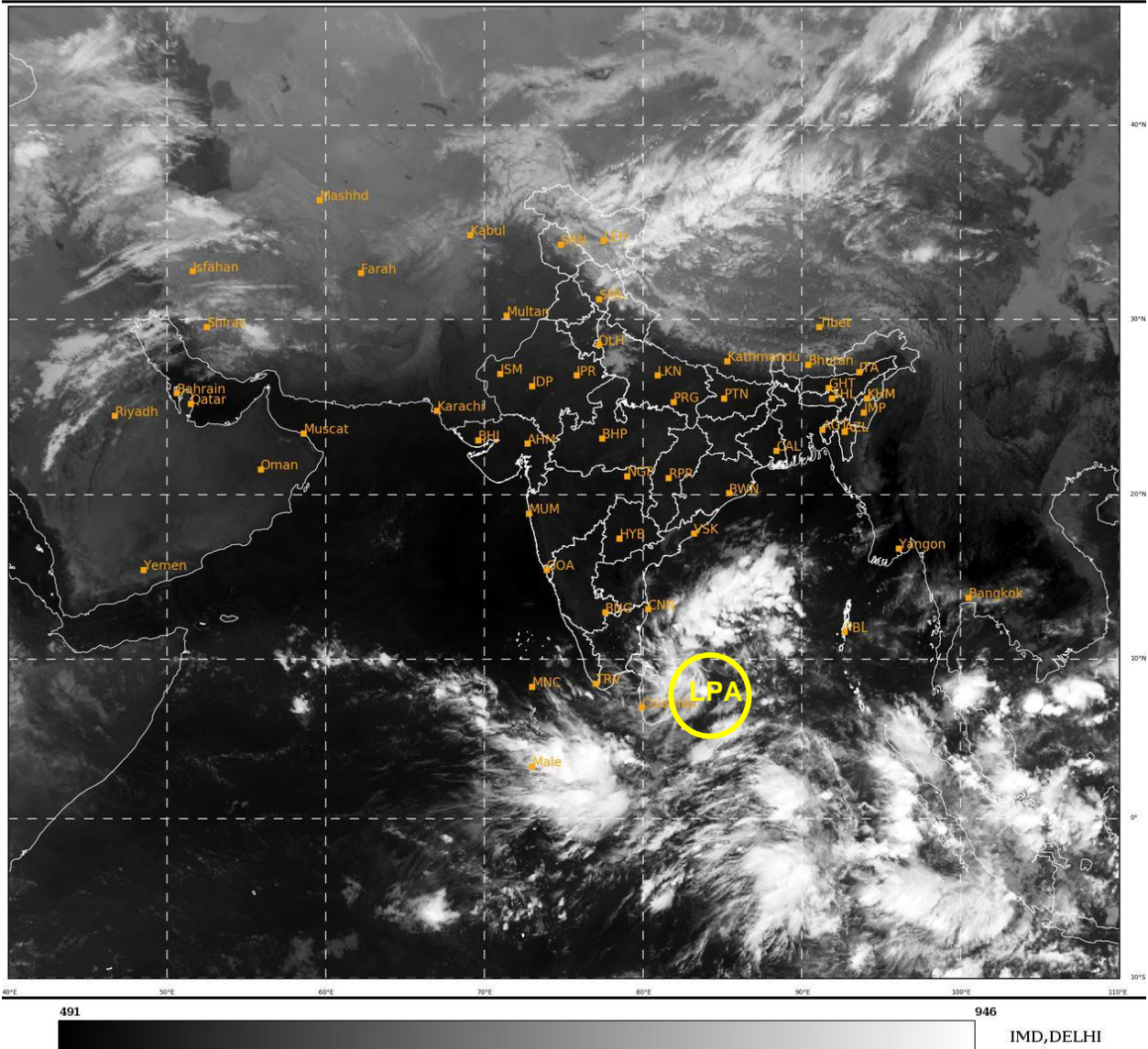
**ARABIAN SEA:**

SCATTERED LOW AND MEDIUM CLOUDS WITH EMBEDDED MODERATE TO INTENSE CONVECTION LAY OVER SOUTH ARABIAN SEA AND COMORIN AREA.

**PROBABILITY OF CYCLOGENESIS (FORMATION OF DEPRESSION) DURING NEXT 120 HRS:**

24 HOURS	24-48 HOURS	48-72 HOURS	72-96 HOURS	96-120 HOURS
NIL	NIL	NIL	NIL	NIL

**REMARKS:** NIL



LPA:Low Pressure Area